

LEAVES Newsletter



Open Houses	1
HCP	2
Stewardship Group	3
BC Housing RV Visioning	4
More Visioning	5
Tree Tours	6
Membership Form	7

online newsletters

Save a tree; View our newsletters online!
2 or more newsletters a year are published **online**.

The newsletters will be posted on our website in pdf format. A direct link will be sent in an email.

Newsletter editions are also available in print to members by request.

newsletter@rhcs.org

Please email us your email address so we can let you know when the latest Newsletter is available online for viewing!

Your email address will be used only to inform you of RHCS news, we will not share your address.

VISIONING BEGINS FOR THE RIVERVIEW LANDS

PRESIDENT'S MESSAGE

At the UBCM Convention in the fall of 2013 a motion was passed by all the municipalities in B.C. to continue with (or re-establish) mental health care at Riverview.

Our Premier did not support the motion and - Late last year the Provincial Government charged BC Housing with the future development of Riverview.

On January 14th at Coquitlam's Riverview Lands Advisory Committee meeting, Michael Flanigan, vice-president of development services at BC Housing, said his agency's aim is to be as inclusive as possible with its vision. They will be tapping into views from health authorities, neighbouring cities, environmental groups, Kwikwetlem First Nation, Metro Vancouver and the Tri-Cities Chamber of Commerce, among others.

BC Housing says it needs to make the redevelopment and possible repurposing of the heritage buildings 'worth the investment' and has called for any work to 'BREAK EVEN'. To many of us, 'break even' is an alarming statement.

Norma Gillespie

The 1st Open Houses have already Happened - Feb. 27 & Mar. 1

BC Housing did not supply us with the first 2 Open house dates soon enough for us to get a newsletter produced. Instead we sent out an e-news blast to all our members who we have an email address for.

The 2 events are completed, & now we move to the NEXT OPEN HOUSES??

We are unclear what those are about or when they will be??

Please join BC HOUSING at their **next** open houses for the Riverview Lands Vision Process, go to their site <http://renewingriverview.com> - They NEED your feedback.

We unfortunately are among the last to be informed so do visit the BC Housing site for dates.

Also come to OUR site for what we are saying at www.rhcs.org or on Facebook

Some of us felt the first open houses were a waste of our time, we saw nothing really different from previous open houses. The comments I heard from attendees were that they think the government already knows what they want to do with the lands and are just letting us feel like we are having some input.

We encourage you to remain involved so that we can preserve the Lands as a place of healing and beauty.



by Hilary Maguire

Yes it is true, the Government wants you to attend yet another OPEN HOUSE to hear your opinion about Riverview.

Please don't allow them to wear you down just yet. Please come to ALL of their open houses to show your support for saving the lands and tell them how they can do that.

If you cannot come in person they have an online area to enter your ideas and support for saving the trees, lands, buildings etc. - <http://renewingriverview.com/>

see pages 1, 4 & 5 for more on Visioning & Open Houses

2012 Heritage Conservation Planning (HCP)

The Heritage Conservation Plan (HCP) claims that it is a "myth" that the Lands (grounds and buildings) can continue to be used for mental health care practices. The heritage consultants who produced this report have not provided evidence that they have the expertise to make this assessment and have not supported this supposed myth with any independent feasibility studies.

Furthermore, this is a statement about land-use planning, not heritage assessment, and should not

be part of the HCP. The Riverview Lands **clearly 'do'** permit continued use for modern health care practices, as demonstrated by Connolly, Cottonwood, and Cypress Lodges. At a time when the Province does not have enough or adequate facilities for the patients who were recently moved from Riverview and when purchasing land elsewhere is extremely expensive, new modern facilities could be built on the Riverview Lands, in accord with City of Coquitlam municipal values and policies.



Whatever Happened to the RIVERVIEW NATURAL HERITAGE STEWARDSHIP ADVISORY GROUP?

In 2001 as part of the Government's¹ commitments relating to the City of Coquitlam's approval of Cottonwood Lodge, government¹ engaged in a formal process to develop a vision for the 'collection of trees' on the Riverview Lands. Two more lodges were constructed over the next few years and this group continued to be a part of this process.

This group was known as the **"Riverview Natural Heritage Stewardship Advisory Group"**. Members were Burke Mountain Naturalists, Riverview Horticultural Centre Society, ARES BC, WSIBLJC, with participation by representatives from the City of Coquitlam, Parks & Recreation and the University of British Columbia, and a private citizen (retired architect).

After many years of meetings and input by the members several reports were produced about protecting the trees, forested areas, green spaces, watercourses, landscape features and buildings. Most importantly the group became a platform to present government with current concerns about the ongoing care and conditions on the site. Members could express all concerns about the lands, especially maintenance.

As was demonstrated this past summer the lands cannot be left unattended or they will fall to ruin.

Over the 11 years the group went through several representatives from the government who each took time to know what the lands were about. The most recent representative never did have that time as the meetings abruptly ended. We have no idea why? There was no notification given to the member groups. The last meeting took place in early spring of 2012. Several e-mails requesting when meetings would commence were either not answered or given the reply of 'we are considering this'.

What happened next for Riverview was the 'BC Government Heritage Conservation Planning'. You may remember the open houses and online survey? Since then there has been no reference to a 'Stewardship group'. **Why?**

Online² the BC Government would like you to believe they are 'working' to be stewards of the lands:

"Our common goal is to act as responsible stewards of the lands within the context of a working institutional facility. We are also invested in working together to ensure that the lands' key features - the tree collection, natural areas and cultural landscape - are properly managed as the next use of the site is determined by BC Housing."



NEGLECTED GROUNDS Summer 2013
What a Mess

We would like to know;

WHO they are working "together" with?

HOW they can steward when they dropped the stewardship group?

WHO IS LOOKING after the Buildings, Lands and Trees if the stewardship group is no longer a working committee?

How is this proper management when it took a public outcry for them to start minimal maintenance again on the lands?

From the government website:

The goal of the vision is:

- To protect and enhance the status and value of the collection in perpetuity.
- To inform any future land planning or change in use processes.

If they want anyone to believe them they need to work with RHCS and BMN again to maintain the site without further loss, or is that simply their goal, demolition by neglect? The longer the site is left like this the more difficult it will be to recover.

Teri Madaisky

¹ Accommodation and Real Estate Services (ARES –formerly BCBC), Shared Services BC, Ministry of Labour and Citizens' Services.

² http://www.accommodationandrealstate.gov.bc.ca/Major_Property_Updates/Riverview/Stewardship/

Hello RHCS Members & Supporters,

Information about the upcoming Open Houses being hosted by BC Housing will be posted on their website <http://renewingriverview.com>. Some of you may see this in the local papers. Information will also be posted to our website if we receive the information in time.

We hope that most of you will be able to attend and submit your suggestions for what you want to see happen at Riverview in the future. If you can't attend, you can submit comments on line. It is important that we speak up about the wonderful sanctuary that Riverview has been - and could be - for mental health care. We know there are some people in the community who would like to see massive residential development take place at Riverview. We want to ensure our voices are heard over theirs. We need to speak up with our vision for a sustainable future at Riverview that will protect the tree collection and Riverview's heritage. You might also want to consider supporting an expansion of the role of Riverview to include other aspects of health care as well as providing some assisted-living facilities for the elderly. With its park-like attributes, Riverview has much to offer.

Our vision for future use of the Riverview Hospital site should be based on an understanding of its history and appreciation of its existing unique values, namely:

- a haven for care of the mentally ill and a place where the pathway begins for re-integration of patients with society,
- an exceptional arboretum with a world-class collection of mature trees growing throughout the grounds,
- a heritage site with important examples of architecture constructed throughout the 20th century in a graciously landscaped setting, and
- significant natural areas and streams which provide wildlife habitat and connections to nearby parks.

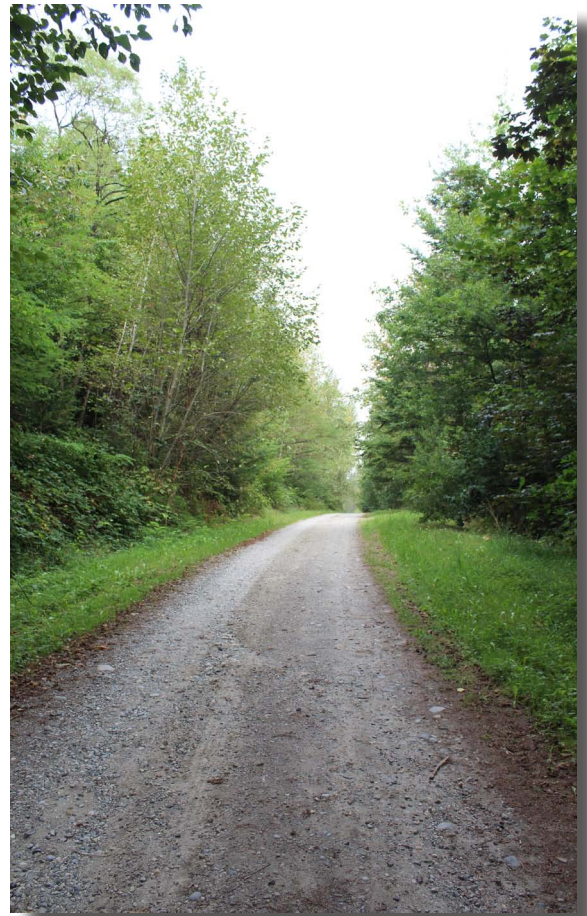


by Christine Hatfull

Future uses at Riverview should build upon these significant values. Thus, our vision includes the following objectives and recommendations for action:

- Ensure that all of the land is kept in public trust and managed as a single unit, even though a variety of functions may occur in the future. The site is owned by the Province of BC.; therefore, this land is our land and should be used to benefit society.
- Consider designation as a Provincial Heritage Site.
- Respect Riverview's heritage and build on the existing values, i.e., mental health care, significant tree collection, heritage buildings and natural assets.

- Continue Riverview's role in providing mental health care, with possible expansion into related health care areas, e.g., care facilities for those suffering from dementia; assisted living facilities. Promote Riverview as a centre of excellence in health care.
- Site new buildings in the footprint of demolished buildings or on "brown" spaces (e.g., paved or gravelled areas) to ensure continuity of landscaping and to avoid impacts on the tree collection and natural areas.
- Find appropriate uses for the older buildings if no longer needed for health care while ensuring architectural features and landscaping are preserved to the greatest extent possible (e.g., heritage museum, government offices, use by non-profit societies, botanical garden facilities, etc.).
- Develop the full potential of the arboretum as a major tourist attraction for Coquitlam and consider expansion into a complete botanical garden/horticultural/education centre.
- Preserve and enhance natural habitat areas and streams. Ensure that such work complements the development of a botanical garden. Complete flora and fauna inventories. Encourage public appreciation of these values.
- Consider development of more formal links with nearby greenspaces (e.g., Riverview Forest Park and Colony Farm Regional Park) for public use and wildlife movement.



by Brian Wormald



by Brian Wormald

We want to ensure a land use planning process that will build on the existing values of Riverview and respect its heritage.

Please help us achieve this by participating in these upcoming Open Houses or submit your comments online;

<http://renewingriverview.com/>

Membership Renewal Due April 1st, 2014

See Membership form on page 5 or pay online www.rhcs.org/membership.html

RHCS Executive

PRESIDENT
Norma Gillespie
norma@rhcs.org

VICE-PRESIDENT
Donna Crosby
donna@rhcs.org

SECRETARY
Donna Crosby
donna@rhcs.org

TREASURER
Murray Clare
murray@rhcs.org

DIRECTORS at LARGE
Val Adolph, Rod Akaster, Ken Baker, Fred
Bennett, Mary Brown, Laura Dupont,
Jenny Farley, Teri Madaisky, Ludy Moysiuk
**COMMUNICATION & CONSERVATION
COMMITTEE**

Ludy, Teri, John & Ken
info@rhcs.org

**TREES, TREE TOURS & HERITAGE
COMMITTEE**

Mary, Norma, Fred, Jenny, Val
norma@rhcs.org mary@rhcs.org



TREEFEST COMMITTEE
Donna, Mary, Carole, Teri,
donna@rhcs.org

FRIENDS of FINNIES
Don, Norma, Kiyoshi
norma@rhcs.org

WEBSITE/NEWSLETTER
Teri Madaisky
teri@rhcs.org

?? STEWARDSHIP COMMITTEE ??

Norma, Donna, Mary
norma@rhcs.org

LEAVES Newsletter

EDITOR
Teri Madaisky

PROOFREADERS
Susan, Laura, Norma, Mary,
Donna

CONTRIBUTORS
Norma G, Teri M, Brenda G

DISTRIBUTION
Norma, Mary, Donna, Teri

PHOTOS
Hilary Maguire, Christine
Hatfull, Brian Wormald

The *Leaves* newsletter is published 4
times a year by the Riverview Horticultural
Centre Society (RHCS), a non-profit society
dedicated to preserving & protecting the
Riverview trees & lands. Opinions and ideas
expressed are not necessarily those of the
society or the editor.

All rights reserved.

Editorial email:
newsletter@rhcs.org

RHCS

Riverview Horticultural
Centre Society
P.O. Box 64616,
RPO Como Lake
Coquitlam, BC
V3J 7V7

Phone: 604-290-9910

Email: trees@rhcs.org

We're on the Web!
visit us:

www.rhcs.org

Please Recycle if printed
Pass on to a friend to read



The old Riverview is closed and done. This break from the past allows for the new Riverview to come into being. It's a jewel of a site that's far too good for anything but a compassionate, diverse care community for mental-health help, education, and healing.

Brenda Guild

Tree Tours Start March 16



2014 Tree Tour Schedule



March 16	Sunday	1 pm	First Tree Tour of 2014
April 13	Sunday	1 pm	Heritage Walk - hosted by RHCS & BMN
April 27	Sunday	1 pm	Spring Tree Tour
May 4	Sunday	1 pm	Mental Health Week Walk to Finnie's Garden
May 11	Sunday	1 pm	Mother's Day Tree Tour
June 8	Sunday	1 pm	Early Summer Tree Tour
July 6	Sunday	1 pm	Linden Tree Tour & Tea (1)
July 17	Thursday	7:30 pm	Linden Tree Tour & Tea (2)
August 10	Sunday	1 pm	Catalpa & North-end Tree Tour
September 13	Saturday	11am-4pm	TREEFEST 2014
October 5	Sunday	1 pm	Tree Tour - Last of the Season

All walks start at the HEY building at 1 pm unless stated otherwise.

2014 - Tree Tour Schedule On-line [click here](#)



The Riverview Horticultural Centre Society

RENEW or JOIN NOW!!
2014

RHCS invites you to join us in supporting our efforts to keep the site of British Columbia's first botanical garden, the Riverview Hospital Lands/Arboretum intact.

Let BC HOUSING Know what YOU want Before it's too LATE!!

Learn more visit our website www.rhcs.org

PAY or DONATE ONLINE!

You can use a credit card to renew your membership online, www.rhcs.org/membership.html

Now with the BC Housing 'VISIONING' Process started we really need your continued support more than ever before.

Visit their site <http://renewingriverview.com/>, to find out how to tell them YOUR VISION.

The Heritage Trees & Buildings on the Riverview Lands

The Heritage Trees at Riverview Hospital form an irreplaceable asset for the people of BC, complementing the Metro Vancouver Park at Colony Farm, as a regional green space for Greater Vancouver.

Preservation of the site will enhance the quality of life in the Tri-City areas, & beyond.

Join us for one of our guided walking tours. Experience the legacy of BC's first Botanical Garden; a treasure trove of trees from the temperate world, some planted a century ago, allowed to grow to their full potential.

Our walks begin at the front door of the Henry Esson Young Building. Follow Holly Drive, turn uphill onto Oak Crescent then right onto Kalmia.

We go rain or shine.

2014 Walking & Tree Tour Schedule:

Tree Tours:	March 16, April 27, May 11, June 8, August 10 & October 5 - Sunday 1 pm
Linden Tree Tours:	July 6 - Sunday 1 pm & July 17 - Thursday 7:30 pm
Heritage Walks:	April 13 - Sunday 1 pm - Hosted by RHCS & BMN
Mental Health Week Walk:	May 4 - Sunday 1pm - Hosted by RHCS & BMN

Treefest 2014 takes place on SATURDAY, September 13, 11am-4pm:

Arborist-led walks, displays, art and music. This free Event is based in & around the Henry Esson Young Building.

The Riverview Horticultural Centre Society, P.O. Box 64616, RPO Como Lake, Coquitlam, BC, V3J 7V7
604-290-9910 trees@rhcs.org www.rhcs.org

MEMBERSHIP APPLICATION - FORM

RHCS invites you to join us in supporting our efforts to keep the site of BC's first botanical garden, the Riverview Hospital Lands, intact.

Membership: (Adult/Family/Senior) **\$5**

NEW ☐ or RENEWAL ☐

You are invited to make a **DONATION** \$
to support the Society _____

Total amount enclosed \$ _____

Please make cheques payable to; Riverview Horticultural Centre Society

Yearly membership is due on April 1st

We Value your Continued Support & Appreciate all the help you can give.

- RHCS is a registered charitable organization
- Donations of \$10 or more will be automatically receipted.
- Receipts for less than \$10 by request.

Last Name(s): _____ First Name(s): _____

Address: _____ City: _____

Province: _____ Postal Code: _____ Phone #: _____
(personal information will NOT be shared with other organizations)

Please Mail to:

The Riverview Horticultural Centre Society
P.O. Box 64616, RPO Como Lake, Coquitlam, BC, V3J 7V7

e-mail: _____

[Receive NEWSLETTERS & UPDATES]

604-290-9910

trees@rhcs.org

www.rhcs.org